

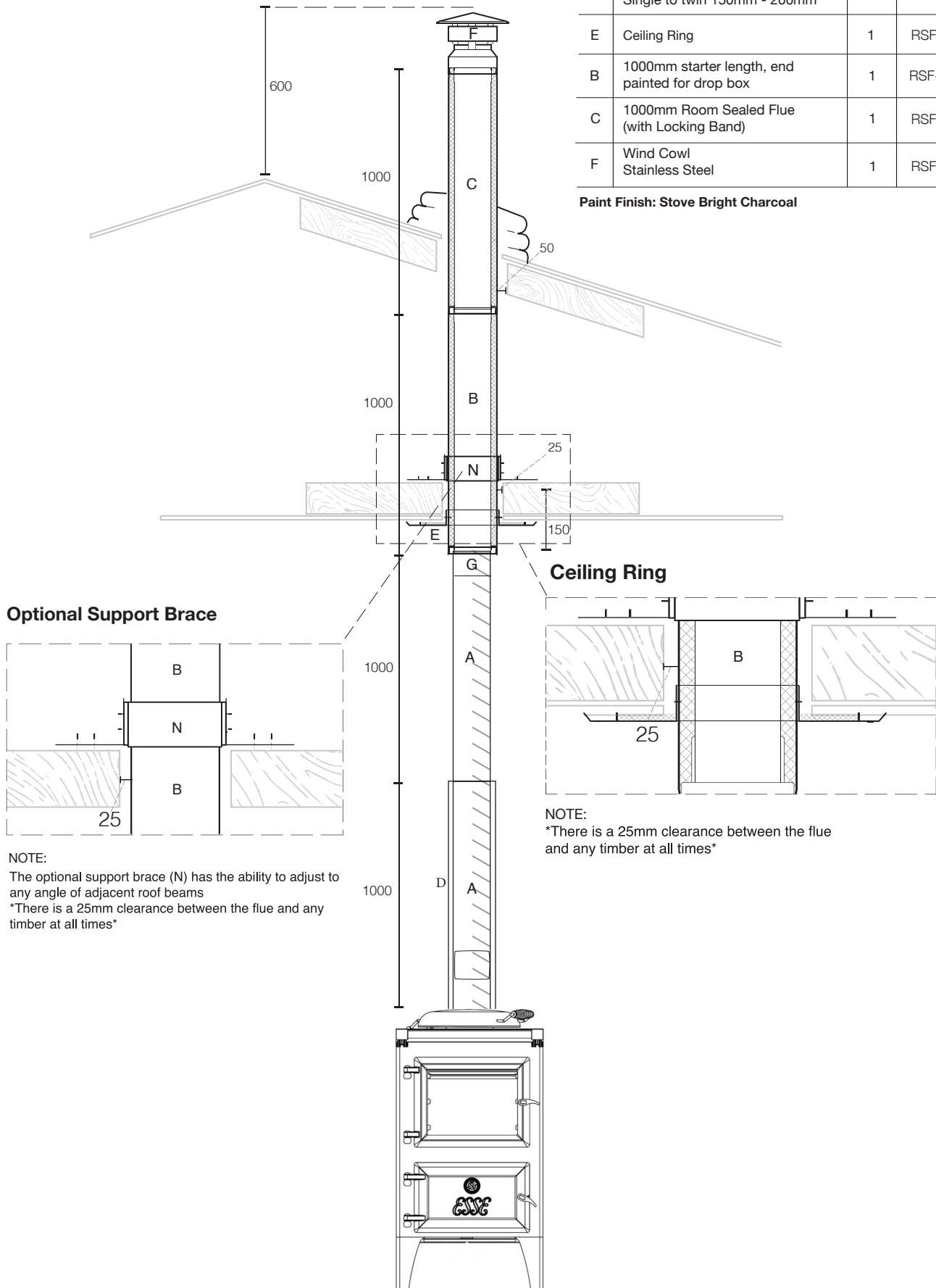
Insulated Room Sealed Flue Kit

ESSE and Room Sealed Flue 4m Flue Kit

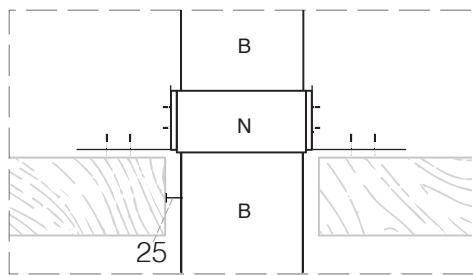
RSF FK6ESSE

| | Item | QTY | Product Code |
|---|---|-----|---------------------|
| A | 150mm x 1,000mm Stainless Flue with Access Door Painted StoveBright Charcoal | 1 | RSF-6DOOR-CH |
| B | 150mm x 1,000 Stainless Steel Flue Painted StoveBright Charcoal | 1 | RSF-6CH |
| D | 1,000mm Heat Shield | 1 | RSF-SHIELD-CH |
| G | Room Sealed Flue Adapter Single to twin 150mm - 200mm | 1 | RSF-6STARTER |
| E | Ceiling Ring | 1 | RSF-CR-CH |
| B | 1000mm starter length, end painted for drop box | 1 | RSF-1000-STARTER-CH |
| C | 1000mm Room Sealed Flue (with Locking Band) | 1 | RSF-1000 |
| F | Wind Cowl Stainless Steel | 1 | RSF-COWL |

Paint Finish: Stove Bright Charcoal

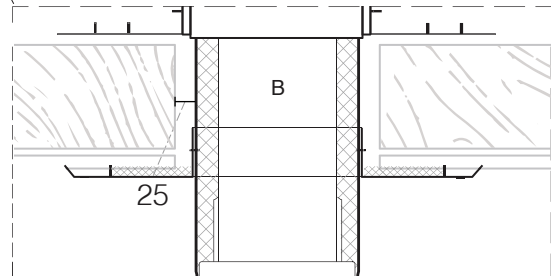


Optional Support Brace



NOTE:
The optional support brace (N) has the ability to adjust to any angle of adjacent roof beams
There is a 25mm clearance between the flue and any timber at all times

Ceiling Ring



NOTE:
There is a 25mm clearance between the flue and any timber at all times